



THE
WOOLLY SHEEP
INN

DRINKS
MENU





THE WOOLLY SHEEP INN

The Woolly Sheep Inn offers fantastic Dales hospitality at its very best.

We work hard to ensure you have a comfortable and enjoyable stay with us.

All 12 bedrooms are en-suite and newly refurbished with a Smart TV and tea/coffee making facilities. A variety of rooms available. Secure parking is available with a token at the rear of the pub and accommodation includes a show-stopping, hearty Yorkshire breakfast to set you up for the day.

If you'd like to bring your dog or dogs (the more the merrier) with you for an overnight stay - please contact us directly so we can ensure you get one of our lovely dog-friendly rooms and to avoid any disappointment.

Dogs are also welcome throughout the pub (as long as they are on their best behaviour and kept on a lead).

Call us direct on 01756 700966 or email info@woollysheepinn.co.uk





	PINT	HALF
Landlord	£5.25	£2.65

THE CLASSIC PALE ALE 4.3%

The drinkers' favourite, a classic pale ale with a complex citrus and hoppy aroma. It has won more awards than any other beer, winning both CAMRA Champion Beer of Britain and the Brewing Industry Awards Gold Medal four times.

Food Pairing: Duck, Fish & Chips, Mature Cheddar



Boltmaker	£5.10	£2.55
------------------	--------------	--------------

BOLD & TASTY YORKSHIRE BITTER 4.0%

A well-balanced, genuine Yorkshire Bitter, with a full measure of maltiness and hoppy aroma – Boltmaker is first choice for the discerning drinker – on both sides of the Pennines.

Food Pairing: Roast Beef, Fried Onions, Chilli Con Carne



Knowle Spring	£5.15	£2.60
----------------------	--------------	--------------

REFRESHING BLONDE ALE 4.2%

An easy-drinking beer with floral and grapefruit aromas, spiced orange on the tongue followed by aromatic citrus hop flavours to finish.

Food Pairing: Scampi & Tartare Sauce, Chicken Burger, Delicate Flat Fish



Golden Best	£4.95	£2.50
--------------------	--------------	--------------

A GOLDEN MILD ALE 3.4%

The last of the true Pennine light milds. A crisp, amber coloured beer that makes a refreshing session ale. The smooth and creamy flavour makes it a popular choice close to the brewery, and increasingly in destination pubs across the country.

Food Pairing: Shellfish, Poached Salmon, Soft Cheese



Dark Mild	£4.95	£2.50
------------------	--------------	--------------

SMOOTH, DARK RUBY ALE 3.4%

A dark ruby beer with roasted notes and a smooth, creamy taste. A favourite of lovers of a good mild. Especially popular in East Lancashire and loved as a guest further afield. One of the finest dark Yorkshire milds still in independent production.

Food Pairing: Pâté, Liver & Onions, Mushroom Stroganoff



Landlord Dark	£5.35	£2.70
----------------------	--------------	--------------

RICH YET LIGHT DARK ALE 4.3%

A perfectly balanced mellow dark beer that has body and depth. It has a fruity, toasted aroma with hints of chocolate, citrus and roasted malts on the tongue. A darker shade of pale!

Food Pairing: Steak & Kidney Pudding, Sticky Toffee Pudding, Chocolate Fudge Cake



Hopical Storm	£6.20	£3.10
----------------------	--------------	--------------

SESSION IPA 4.0%

Refreshing, light, easy-drinking. A balanced 4% session IPA topped with flavours of mandarin, mango and passion fruit.

Food Pairing: Roast Pork, South East Asian Cuisine, White Fish, Shellfish



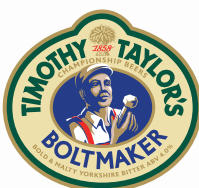


BEER FLIGHTS



**The perfect way to discover
your new favourite ale
from Timothy Taylor's**

**CREATE YOUR OWN 3 x 1/3 PINT BEER FLIGHT
CHOOSE FROM**



£5.20 PER FLIGHT

**Why not pair your beer flight with some of our dishes.
Look out for the matching suggestions on our menu.**

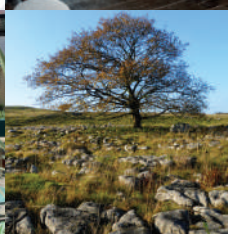
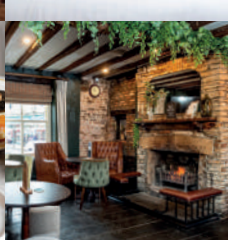
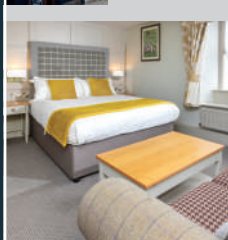
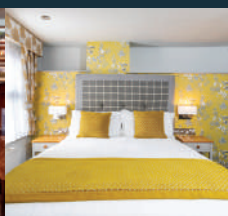
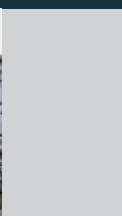




THE WOOLLY SHEEP INN

EAT, DRINK, SLEEP

The Woolly Sheep Inn is a prime example of fantastic accommodation.



Boasting twelve stylish en-suite bedrooms for those wishing to make the most of the beautiful Skipton area and the Yorkshire Dales.

Providing you with a hearty Yorkshire breakfast, a Smart TV and a secure car park, including a cycle storage area.



DOG-FRIENDLY

Book direct for the best price

T: 01756 700966 E: info@woollysheepinn.co.uk

woollysheepinn.co.uk



ON DRAUGHT

	PINT	HALF
Estrella Damn 4.6%	£6.00	£3.00
Birrificio Angelo Poretti 4.8%	£5.95	£3.00
Birra Moretti 4.6%	£6.35	£3.20
Amstel 4.1%	£5.50	£2.75
Guinness 4.2%	£6.25	£3.15
Madri 4.6%	£5.95	£3.00
Thatchers Gold 4.8%	£6.00	£3.00

BOTTLES & CANS

Budweiser 330ml 4.5%	£5.00
Peroni Red 330ml 4.7%	£5.00
Corona 330ml 4.5%	£5.00
Erdinger 500ml 5.3%	£6.00
Peroni Gluten Free 330ml 5.0%	£5.50
Bulmers Original 500ml 4.5%	£6.00
Bulmers Crushed Red Berries & Lime 500ml 4.0%	£6.00
Old Mout 500ml 4.0%	£6.25
STRAWBERRY & APPLE, KIWI & LIME, BERRIES & CHERRIES, PINEAPPLE & RASPBERRY	
Rekorderlig 500ml 4.0%	£6.25
STRAWBERRY-LIME, PASSIONFRUIT, WILD BERRIES, MANGO-RASPBERRY	

ALCOHOL FREE (0%)

Guinness Zero 538ml 0.0%	£5.00
Heinekin 0.0% Alcohol Free 330ml 0.0%	£4.00
Rekorderlig Alcohol Free 500ml 0.0%	£4.50
STRAWBERRY-LIME	
Corona Cero 330ml 0.0%	£4.00



VODKA

	SINGLE
Eristoff 37.5%	£3.95
Absolut 40%	£4.15
Absolut Vanilla 38%	£4.15
Grey Goose 40%	£4.75
Noble Spring® Premium Vodka 40%	£4.50

Made at Royal Spring Distillery in Keighley just a few minutes away from Timothy Taylor's brewery, Noble Spring® Premium Vodka is double distilled from molasses spirit and blended at source with pure natural mineral water from their very own source. A super smooth vodka with remarkable depth and a velvet-like finish.

GIN

Whitley Neill 43%	£4.50
BLACKBERRY, RASPBERRY, PARMA VIOLET, RHUBARB & GINGER, DARK CHERRY, DISTILLERS CUT	
Whittakers 42%	£4.50
Brockmans 40%	£4.20
Bombay Sapphire 40%	£3.95
Tanqueray 47.3%	£4.50
Hendrick's 41.4%	£4.50
Gordon's Pink 37.5%	£3.95
Malfy Con Limone 41%	£4.70
Malfy Con Arancia 41%	£4.70
Malfy Gin Rosa 41%	£4.70
Slingsby Rhubarb 40%	£4.65
Sipsmith London Dry 41.6%	£4.50
Hooting Owl 42%	£4.55
SPICED BLOOD ORANGE, PINK GRAPEFRUIT & PINEAPPLE, MANGO & PASSIONFRUIT, RHUBARB & VANILLA, NORTH YORKSHIRE GIN, YORKSHIRE RASPBERRY	
Noble Spring® London Dry Gin 45%	£4.50

Made at Royal Spring Distillery in Keighley just a few minutes away from Timothy Taylor's brewery, Noble Spring® London Dry Gin blends 13 high quality botanicals with pure natural mineral water from their very own source. A vibrant harmony of fresh citrus, berries and mild warmth leads to a lengthy and distinctive ultra-smooth finish.



WHISKY

	SINGLE
Cragganmore 12yr 40%	£4.55
Dalwhinnie 15yr 43%	£4.75
Dewars 12yr 40%	£4.55
Famous Grouse 40%	£3.95
Jameson Irish Whiskey 40%	£4.15
Jack Daniel's Single Barrel 45%	£4.95
Jack Daniel's 40%	£3.95
Jack Daniel's Honey 35%	£3.95
Jack Daniel's Fire 35%	£3.95
Woodford Reserve Kentucky Bourbon 43.2%	£4.25
Laphroaig 10yr 40%	£5.05
Glenmorangie 10yr 40%	£4.75
Talisker 10yr 45.8%	£5.05
Glenkinchie 12yr 43%	£4.95

RUM

Captain Morgan Spiced 35%	£3.95
Dead Man's Fingers 37.5%	£4.15
SPICED, CHERRY, PASSION FRUIT, PINEAPPLE, MANGO	
Selfish Spirits Dark Spiced 40%	£4.75
Subtle flavours of orange, lime, vanilla and caramel on an aged rum base. They support worthy causes so you can feel good about having a drink; works well with cola, ginger ale, in your favourite cocktail or matches up nicely as a light digestif with your dessert.	
Kraken Black Spiced 40%	£4.15
Bacardi 37.5%	£3.95
Old J Spiced 35%	£4.15
Old J Tiki Fire Spiced 75.5%	£4.95



LIQUEURS

	SINGLE
Disaronno 28%	£3.95
Aperol 11%	£4.00
Chambord 16.5%	£3.95
Cointreau 40%	£3.95
Jägermeister 35%	£3.95
Malibu 21%	£3.95
Passoã 17%	£3.95
Pernod 40%	£3.95
Pimm's No.1 Cup 25%	£4.00
Southern Comfort 35%	£3.95
Tia Maria 20%	£3.95
Baileys Irish Cream 17%	£4.50
Sambuca 38%	£3.95
PLEASE ASK YOUR SERVER FOR AVAILABLE FLAVOURS	
Jose Cuervo Gold 38%	£3.95
Frangelico 20%	£3.95
Limoncello 27%	£3.95
Archers 18%	£3.95
Cockburns 20%	£4.00





THE WOOLLY SHEEP INN BREWERY SHOP

Please see the display case
for available items. Order and
purchase from the bar.



Can't find what you're after?

Visit our online shop for the full range,
including free UK delivery on every order.

www.timothytaylorshop.co.uk



WHITE WINE

#	WINE	BY GLASS	BOTTLE
---	------	----------	--------

- | | | |
|---------------------------------------|-------------|---------------|
| 1. First Fleet Chardonnay 2023 | V | £25.00 |
| South-Eastern Australia, Australia | 175ml Glass | £6.45 |
| Chardonnay | 250ml Glass | £8.55 |

A delicious Chardonnay that captures the pioneering spirit of the first voyages to Australia in a crisp, modern style. Red apple and melon fruit fills a palate that is dry yet well-rounded, making this a versatile accompaniment to food.

- | | | |
|---------------------------------------|-------------|---------------|
| 2. Arcano Sauvignon Blanc 2023 | V | £25.00 |
| Valle Central, Chile | 175ml Glass | £6.45 |
| Sauvignon Blanc | 250ml Glass | £8.55 |

An elegant yellow colour with vibrant greenish hues. The nose offers tantalising tropical fruit aromas and white flowers. The palate is clean, and fresh, balanced and with a very refreshing finish.

- | | | |
|---|-------------|---------------|
| 3. Poggio Alto Pinot Grigio 2023 | V | £26.00 |
| Veneto, Italy | 175ml Glass | £6.70 |
| Pinot Grigio | 250ml Glass | £8.80 |

Fresh pear and almond notes infuse this delicately structured, stylish Pinot Grigio. Dry yet rounded, with a refreshing finish.

- | | | |
|--|-------------|---------------|
| 4. Featherdrop Sauvignon Blanc 2022 | | £35.00 |
| South Island, New Zealand | 175ml Glass | £8.45 |
| Sauvignon Blanc | 250ml Glass | £11.80 |

Lively aromas of gooseberry, passion fruit, grapefruit and crisp red capsicum. Bold flavours of lemon, lime, grapefruit and gooseberry tantalise the palate and provide a refreshing clean finish.

- | | | |
|--|----------|---------------|
| 5. Niel Joubert Byter Chenin Blanc 2023 | V | £27.00 |
| Coastal Region, South Africa | | |
| Chenin Blanc | | |

Very attractive nose with lots of tropical fruits such as pineapple, guava and citrus fruit, carrying on to the crisp, refreshing palate.

- | | | |
|---|--|---------------|
| 6. Foxwood Dawn Picked Viognier 2023 | | £29.00 |
| Languedoc-Roussillon, France | | |
| Viognier | | |

This wine has classic Viognier characters of ripe apricot and summer flowers. Medium-full in body, with a soft texture and a refreshing streak of citrus, this is summer in a glass.

- | | | |
|--|----------|---------------|
| 7. Conde Valdemar Rioja Blanco 2022 | V | £32.00 |
| Rioja, Spain | | |
| White Blend | | |

Fresh, intense aromas of fruits and white flowers, dominated by apple and pear nuances. Fruity and fresh on the palate with a crisp finish.

- | | | |
|---|--|---------------|
| 8. Gavi di Gavi La Contessa 2022 | | £37.00 |
| Piedmont, Italy | | |
| Cortese | | |

Great texture and precision, with distinctive greengage and almond notes on the palate. Fresh and dry.



RED WINE

#	WINE	BY GLASS	BOTTLE
---	------	----------	--------

9. Valdemoreda Tempranillo 2021	£25.00
--	---------------

Spain, Spain	175ml Glass	£6.45
Tempranillo	250ml Glass	£8.55

This smooth Tempranillo shows complex ripe fruit aromas with subtle spicy hints of vanilla and caramel thanks to five months in oak. Rounded and well balanced in the mouth with a full, long aftertaste.

10. First Fleet Shiraz 2021	£25.00
------------------------------------	---------------

South-Eastern Australia, Australia	175ml Glass	£6.45
Shiraz	250ml Glass	£8.55

A vibrant Shiraz that captures the pioneering spirit of the first voyages to Australia in a modern, easy-drinking style. Mulberry and plum fruit mixes with spice on the smooth-textured palate, making this a versatile accompaniment to food.

11. Arcano Merlot 2022	£26.00
-------------------------------	---------------

Valle Central, Chile	175ml Glass	£6.70
Merlot	250ml Glass	£8.80

An inviting deep ruby-red in colour, this wine is packed full of ripe blackberry and plum aromas with delicate hints of spice and crushed black pepper. The palate is succulent, soft and fruity.

12. Punta de Vacas Malbec, Norton 2023	£28.00
---	---------------

Mendoza, Argentina	175ml Glass	£6.95
Malbec	250ml Glass	£9.80

A typical Malbec, with a perfumed bright and floral nose of violets and bramble fruit followed by a rich, juicy palate with flavours of ripe plums, blackberries, liquorice and exotic spice leaving a pleasant and soft finish.

13. Morandé Pionero Pinot Noir Reserva 2021	£29.00
--	---------------

Aconcagua, Chile
Pinot Noir

A pure and elegant Pinot Noir with notes of raspberry and gentle spice on the nose. The palate is light and silky in texture, allowing the beautiful summer fruit flavours to shine through.

14. Codici Masserie Primitivo 2022	£29.00
---	---------------

Puglia, Italy
Primitivo

This full-bodied and bold Primitivo has an abundance of red berry fruit flavours, alongside notes of dark fruit jam. The palate is soft and well-rounded, with a hint of spice on the finish.

15. Feudo Arancio Nero d'Avola, Sicilia 2021	£32.00
---	---------------

Sicily, Italy
Nero d'Avola

This deeply coloured Nero d'Avola shows lush notes of blackcurrant, wild strawberry and crunchy pomegranate. The palate is soft, round and velvety.

16. Finca La Colonia Colección Malbec, Norton 2023	£37.00
---	---------------

Mendoza, Argentina
Malbec

Deep red colour with violet hues. Aromas of ripe red fruit, cassis and black pepper, with more fruit and a touch of spice on the palate. Elegant and smooth with a long finish.



ROSÉ

# WINE	BY GLASS	BOTTLE
--------	----------	--------

17. Golden State Zinfandel Rosé 2022		£25.00
---	--	---------------

California, USA

175ml Glass

£6.45

Zinfandel

250ml Glass

£8.55

Fruity aromas and flavours of ripe red fruit, cranberries and watermelon. The palate has a gentle sweetness with a refreshing acidity that prevents it from becoming cloying.

18. Poggio Alto Pinot Grigio Rosé 2023		£26.00
---	--	---------------

Abruzzo, Italy

175ml Glass

£6.70

Pinot Grigio

250ml Glass

£8.80

With a delicate pale pink colour and an elegant nose of acacia flowers, this light-bodied dry rosé is delightfully refreshing

FIZZ

19. Ca' del Console Prosecco Extra Dry		£30.00
---	--	---------------

Veneto, Italy

125ml Glass

£6.35

Glera

A classic Prosecco with aromas of white peach, pear and flowers. The palate is fresh, not too dry, and clean as a whistle all the way through to the sparkling finish.

20. Champagne Testulat Carte d'Or Brut Blanc de Noirs		£60.00
--	--	---------------

Champagne, France

White Blend

Rich, fruity champagne with notes of vanilla and peaches. Elegant and well-balanced.

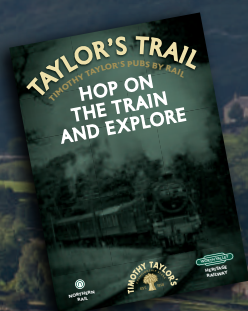


ALL WINES AVAILABLE BY THE GLASS ARE ALSO AVAILABLE IN 125ml MEASURES



Pub Walks, Bike Rides & Railway Trail

Traditional Timothy Taylor's pubs and classic Yorkshire countryside are a match made in heaven. Discover a range of bespoke walking routes, bike rides and the famous Taylor's Railway Trail. All centred around Timothy Taylor's pubs. The perfect finish to any adventure, with each one serving a range of Taylor's award-winning ales and offering delicious homecooked meals.



**BOLTMAKERS
ARMS**
3min

TAYLOR'S ON THE GREEN
Timothy Taylor's Tap Room
10min

THE NEW INN
4min

**THE
ALBERT**
11min

**THE WOOLLY
SHEEP INN**
9min

DOG & GUN
Malsis
50min

THE ROYAL OAK
13min

**THE BROWN
COW**
7min

**TOWN HALL
TAVERN**
8min

SKIPTON

CONONLEY

KEIGHLEY

BINGLEY

LEEDS



**THE
GROUSE**
45min

OAKWORTH

HARROGATE

**THE
FLEECE INN**
8min

HAWORTH

**INN AT
CHELTENHAM
PARADE**
4min

DOG & GUN
Oxenhope
30min

OXENHOPE



Discover more at

www.timothytaylor.co.uk



COCKTAILS

CHANGE MONTHLY, PLEASE SEE THE BOARD

MOCKTAILS

All the fun with none of the alcohol

Orange and Passion Fruit	£3.50
Apple and Mango	£3.50
Apple and Raspberry	£3.50
Raspberry and Cranberry	£3.50

MIXERS

	200ml
Fever-Tree Indian Tonic Water	£2.40
Fever-Tree Light Tonic Water	£2.40
Fever-Tree Mediterranean Tonic Water	£2.40
Fever-Tree Elderflower Tonic Water	£2.40
Fever-Tree Original Ginger Ale	£2.40





SOFT DRINKS

	PINT	REG.
Pepsi Max	£3.75	£2.95
Pepsi	£3.75	£2.95
Diet Pepsi	£3.75	£2.95
Lemonade	£3.75	£2.95
Orange Juice	£3.25	£2.50
Apple Juice	£3.25	£2.50
Cranberry Juice	£3.25	£2.50
Fever-Tree Sparkling Cloudy Apple 275ml		£3.95
Fever-Tree Sparkling Raspberry Lemonade 275ml		£3.95
Fever-Tree Sparkling Sicilian Lemonade 275ml		£3.95
Fever-Tree Sparkling Ginger Beer 275ml		£3.95
Fruit Shoot Blackcurrant & Apple 275ml		£2.50
Fruit Shoot Orange 275ml		£2.35
Still Water 330ml		£2.25
Sparkling Water 330ml		£2.25
Bottle Coke 330ml		£3.75
Bottle Diet Coke 330ml		£3.75
Appletizer 275ml		£3.75
Fanta 330ml		£3.75
Red Bull 250ml		£3.95
Tomato Juice 200ml		£2.75

SNACKS

Crisps	£1.50
Salted Nuts	£1.50
Dry Roasted Nuts	£1.50
Pork Scratchings	£1.50
Wotsits	£1.50
Flamin' Hot Monster Munch	£1.50
Mini Cheddars Original	£1.50



HOT DRINKS

Americano	£3.30
Cappuccino	£3.75
Latte	£3.75
Flat White	£3.75
Espresso	£2.50
Double Espresso	£3.00
Mocha	£4.25
Hot Chocolate	£4.25
Yorkshire Tea	£2.50
Earl Grey	£2.60
Fruit Tea	£2.75



TIMOTHY TAYLOR'S
CHAMPIONSHIP BEERS
EST. 1858

TAYLOR'S

ON

THE GREEN

TAP & KITCHEN

Taylor's on the Green is the Keighley-based tap room and kitchen from Timothy Taylor's brewery. Combining delicious food with Taylor's wide range of award-winning ales, as well as an onsite brewery shop.

The perfect destination for fans both near and far to experience that taste of Taylor's.



**WIDE RANGE OF TIMOTHY TAYLOR'S ALES
ALL-DAY FOOD OFFER • WINES, COCKTAILS,
COFFEES & CAKES • DOG-FRIENDLY
HEATED OUTDOOR BEER GARDEN**

Church Street, Keighley BD21 5HT
T: 01535 603053 E: info@taylorsonthegreen.co.uk
www.taylorsonthegreen.co.uk
Facebook Instagram @taylorsonthegreen





All for that taste of Taylor's

THE WOOLLY SHEEP INN

38 Sheep Street, Skipton, North Yorkshire BD23 1HY
Tel: 01756 700966 Email: info@woollysheepinn.co.uk

WHY NOT BOOK A TABLE ONLINE?
woollysheepinn.co.uk

 @woollysheep  @thewoollysheepinn